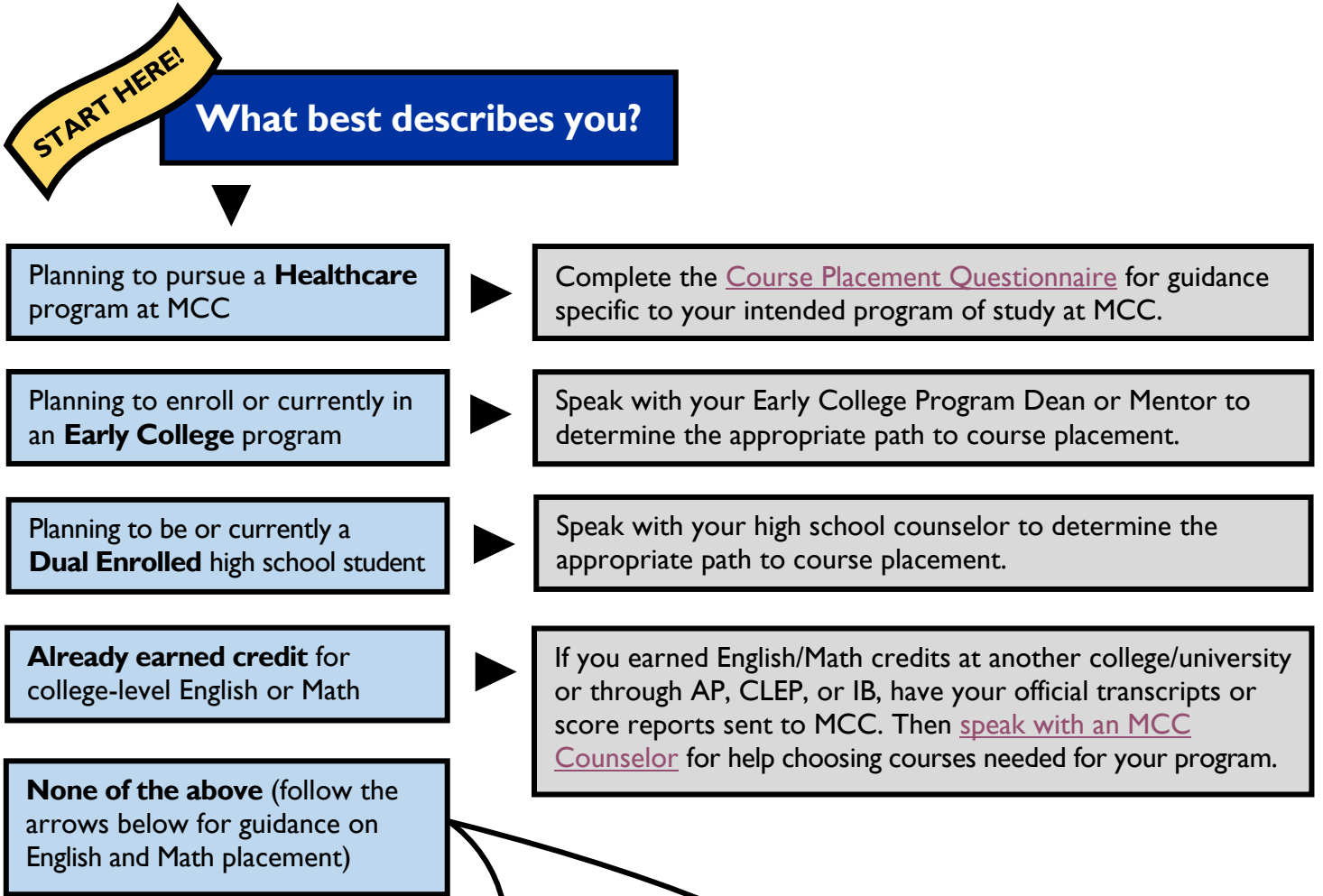


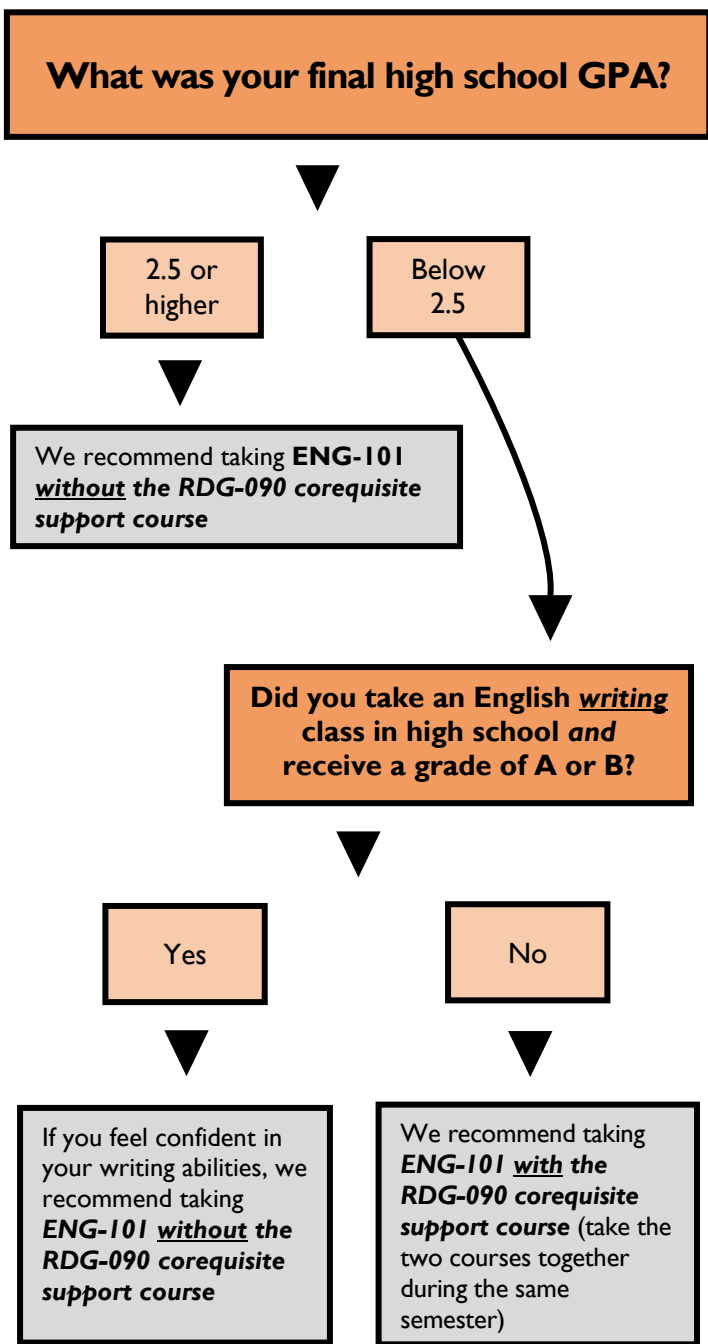
Course Placement Flowchart

Muskegon Community College

Use this flowchart for recommendations on what English and Math courses to take at MCC. For additional guidance or any questions, [speak with an MCC Counselor](#).



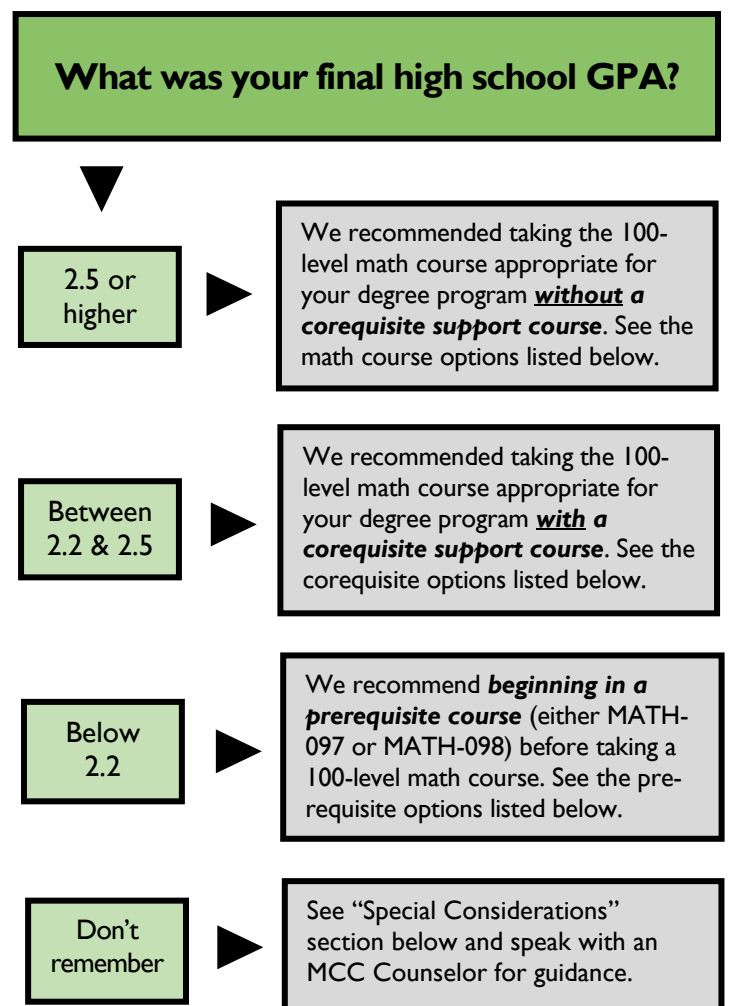
English



English Courses & Further Guidance

- ENG-101 (English Composition I):** The English course required in most MCC degree programs, which may be taken with or without the RDG-090 corequisite support course
- RDG-090 (Integrated Reading and Writing):** The corequisite support course designed to provide additional support to students taking ENG-101; may only be taken alongside ENG-101 (during the same semester)
- ENG-102 (English Composition II):** The English Composition course that follows ENG-101; students must first complete ENG-101 with a grade of C or higher (or have ENG-101 credit through AP, CLEP, etc.) before taking ENG-102

Math



Math Courses & Further Guidance

- 100-Level & Optional Corequisite Support Courses**
- MATH-107A (Math for Liberal Arts) ↔ take with MATH-087
 MATH-109A (College Algebra) ↔ take with MATH-089
 MATH-115A (Probability & Statistics) ↔ take with MATH-085
- Some programs may require other Math courses such as MATH-105, MATH-141, or MATH-161, which may have required prerequisites/entrance requirements. For further guidance on math course requirements, speak to an MCC Counselor.*
- Prerequisite Courses (if needed)**
- MATH-097 → Leads to MATH-107A (Math for Liberal Arts)
 MATH-098 → Leads to MATH-109A (College Algebra) or MATH-115A (Probability & Statistics)
- Special Considerations**
- If you earned C's or lower in high school math, or if it has been 10 or more years since you took any math class, we recommend taking the corequisite support course along with the 100-level math course, or the prerequisite course (see the course options above).
 - If the above applies to you and you choose *not* to take a math prerequisite course, we recommend taking a face-to-face or hybrid version of the 100-level course (rather than an online-asynchronous version).
 - If you have low math skills, we recommend working with the College Success Center staff to develop a personalized plan before taking a 100-level math course.

Need Additional Help?

Meet with an MCC Counselor to assist with course planning and to make sure you're taking the correct courses that are needed for your degree program. Visit <https://www.muskegoncc.edu/departments/counseling-advising/> to learn more about connecting with