

## How to Access your Home Directory from Off-campus (SFTP)

You **must** request off-campus access to your home drive by sending an e-mail to [getftp@muskegoncc.edu](mailto:getftp@muskegoncc.edu). Please include your name, student number, logon name, and phone number. You will not be able to connect to your home drive until you have been notified that you have been added to the authorized ftp user list.

SFTP stands for SSH File Transfer Protocol. Essentially, it is a software program that allows someone who has files on different computers to move them from one location to another. As Muskegon Community College uses a secure it will require a SFTP client program to be installed in order to access your home directory from off-campus. There are many different software applications you can use for running SFTP, some of them are available free on the internet.

Below is a list of free SFTP programs that can be downloaded from the Internet. Once you have downloaded and install your preferred SFTP program you will connect to the SFTP host of <ftp.muskegoncc.edu>, port 22, server type: SFTP using SSH, logon type: Account using your MCC username and password. Step by Step instructions using Filezilla as an example follows this list of SFTP programs.

<http://filezilla.sourceforge.net/>

FileZilla is a free, open source FTP client for Windows distributed under the GNU General Public License. You can do the usual stuff, upload and download files, as well as resume uploads or downloads, works with firewalls, supports SFTP (Secure FTP) and SSL secured connections, handle queues of files to be uploaded/downloaded, etc.

<http://cyberduck.ch/>

Cyberduck is an open source FTP and SFTP browser for Mac OS X. It supports drag and drop, resuming of uploads and downloads, synchronisation of files on a local computer with a server, uploading and downloading of folders, etc. It is licensed under the GNU GPL.

<http://www.coreftp.com/>

Core FTP Lite is a Windows FTP client that supports uploading/downloading/deletion of directories (folders) and files, browser integration, SFTP (or secure FTP), SSL/TLS, handling of file permissions, transfer bandwidth control, etc.

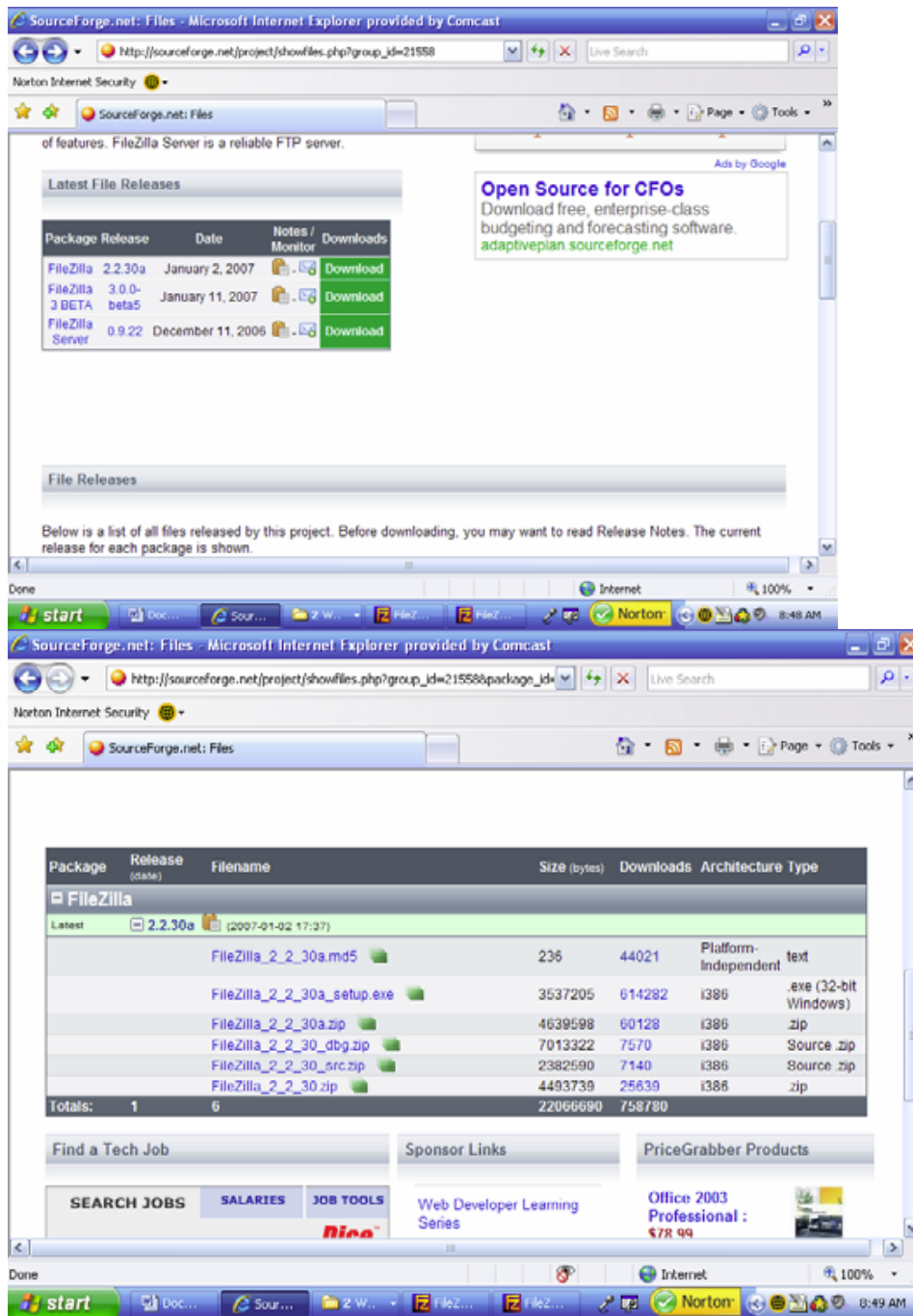
<http://rsug.itd.umich.edu/software/fugu/>

Fugu is a free open source frontend for SFTP (Secure FTP), SCP and SSH. It is released under a BSD license, and supports Mac OS X.

<http://www.chiark.greenend.org.uk/~sgtatham/putty/>

Putty is a free open source set of programs. It includes a Secure Shell client (SSH), an SCP client (secure copy), a command line Secure FTP client (SFTP), a Telnet client, etc.

# Download the latest version of Filezilla



Open the program and choose site manager, then create a new site and enter in the site details:

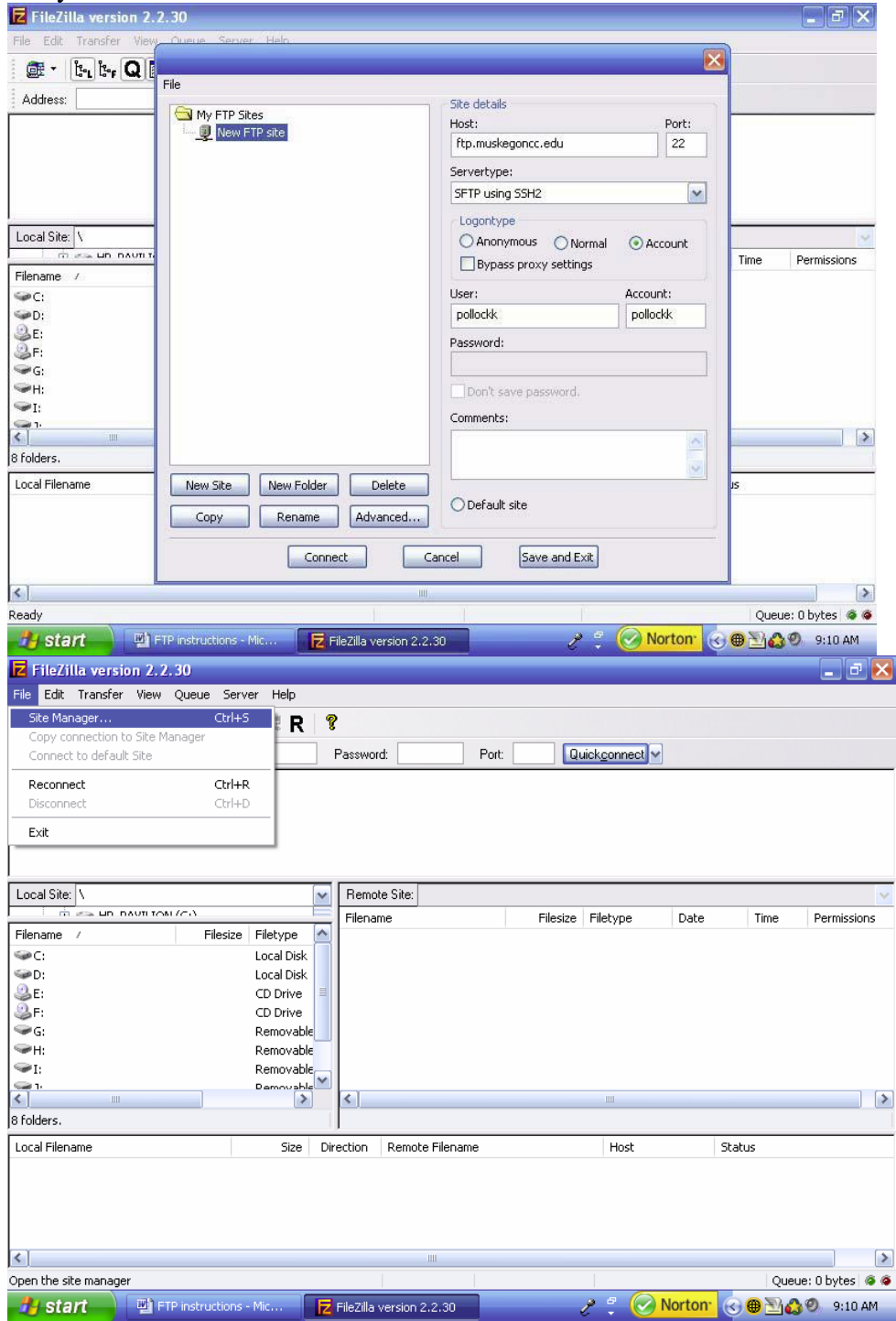
SFTP host: <ftp.muskegoncc.edu>

Port: 22

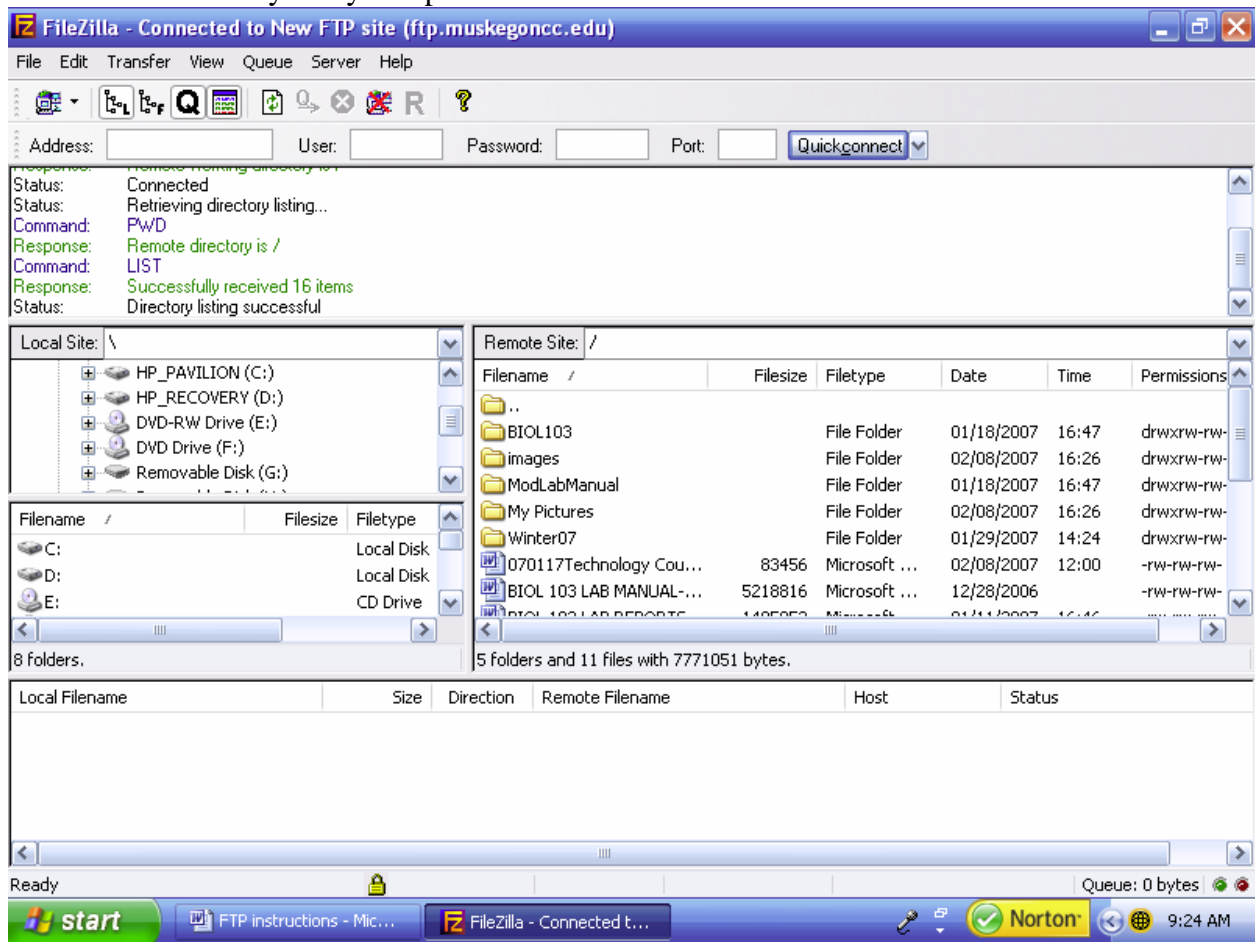
Server Type: SFTP using SSH

Logon Type: Account

Use your MCC username for User and Account



This window shows my folders and files on my home computer on the left and my folders and files of my home directory at MCC on the right. You can then click and drag the files from one window to the other to copy the files from MCC to home and vice versa. Local directory is my computer at home. Remote is MCC



When you are done, you will need to go to the file menu and disconnect

